

ORION[®] II

a new era by LVE[®]

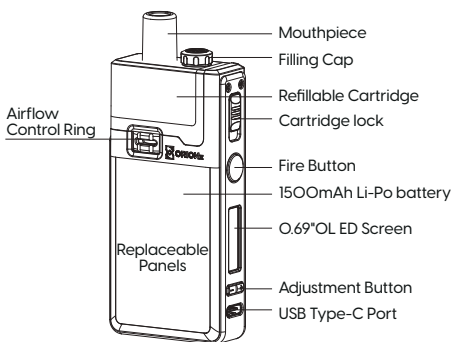


USER MANUAL

Thank you for choosing an LVE product.
Please read these instructions thoroughly before using the product to ensure a perfect vaping experience. If you have any additional questions about this product, please consult your local store or contact us through our Website: www.lvevapor.com

Orion II is the next generation of the legendary Orion pod mod. Pocket sized but packs a punch! Perfect for all levels of vapers or smokers who are looking for alternatives.

OVERVIEW



SPECIFICATION

Dimensions	103x43x17.2mm
Frame	Zinc Alloy
Pod Material	PCTG
Capacity	5.0ml/2.0ml TPD Version
Weight	-140-170g
Panels	Abalone/Carbon fiber/leather/glass/stabilized wood/Wood
Battery	1500mAh Li-Po battery

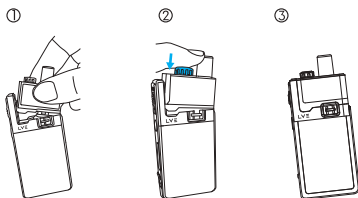
CHIPSET SPECIFICATIONS

Output Power	5-40W
Charging Current	DC 5V/2A, Type-C
Resistance Range	0.15Ω-3.0Ω
Display	0.69" OLED Screen

USER INSTRUCTIONS

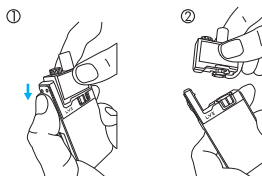
1. Install the pod

Insert the pod by angling it into position and pressing down on the filling cap until you hear a click sound.



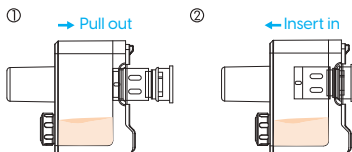
2. Remove the pod

Slide the cartridge lock down to unlock the Pod and pull it off of the device.



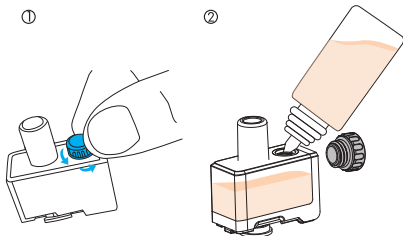
3. Replace the coil

Pull out the used coil, press a new coil in firmly until it seats securely, you should feel two clicks while pressing. If you have any e-liquid remaining in the cartridge, tilt the tank to one side when removing the used coil and installing the new one to prevent leaking.

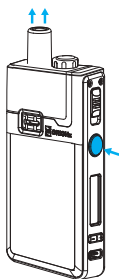


4. Fill the E-liquid

Unscrew the filling cap to open and fill the cartridge with e-liquid. Make sure to tighten the cap immediately after filling to prevent leaking. Please wait 5 minutes for the new coil to be saturated before use.

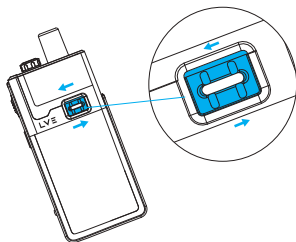


5. Start vaping: Press and hold the power button and inhale through the mouthpiece. Release the power button and exhale.



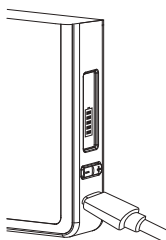
6. Airflow Adjustment

Rotate the airflow control ring to adjust the draw tightness to your liking.



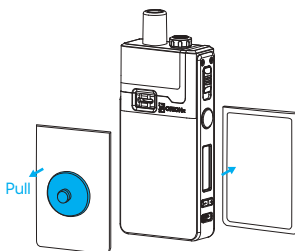
7. Charging

Charge device with the provided USB cable.



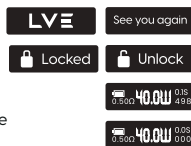
8. Replace panels

You can remove the panels on both sides by using the provided suction cup and replace with new panels.



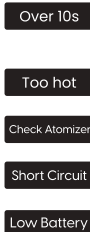
9.System Operation

- 1.)Power on/off: press the power button 5 times in 2 seconds.
- 2.)Press the power button and "+"button simultaneously to lock or unlock the power adjustment buttons.
- 3.)Adjust the power: press the "+"button or "-" button to adjust the power.
- 4.)Puff counter clear: Press the power button and "-" button simultaneously to clear the puff counts.



PROTECTIONS

1. Auto-shut off protection: the device contains an automatic shut-off feature which will disable the device if the power button is depressed for more than 10 seconds, and "Over 10s" will show on the screen.
2. PCBA Overheat protection: the device will pause operation when the inner mainboard temperature exceeds 75°C, "too hot" will appear on the screen.
3. No-atomizer protection: the device will not operate and "Check Atomizer" will appear on the screen if the coil is not detected.
4. Short-circuit protection: In the rare event that a short-circuit is detected, the device will stop working and "Short Circuit" will show on the screen.
5. Low voltage protection: when the battery level is too low the device will cease to operate and "Low Battery" will appear on the screen.
6. Over discharge protection: In the rare event that the battery level becomes extremely low, the device will stop working.
7. Over charge protection: the device will automatically stop charging when the battery cell is fully charged.
8. USB input protection: when the USB detects an out of spec or malfunctioning charger or cable, the device will automatically stop charging.



CAUTIONS

1. Please turn off the device when it is not in use.
2. Please do not leave the charging device unattended.
3. Do not drop, throw or abuse your device, this may cause damage.
4. Please use a standard USB charger with standard charging current and voltage range.
5. Keep away from the water or any flammable gas, liquid.
6. Do not expose the device to direct sunlight, dust, moisture or mechanical shock.
7. Do not expose the device to extreme temperature.(Recommended temperature range: -10-60°C/ 14-140°C while using and -10-45°C/14-113°C while storing).
8. EEE Recycling: the product should not be treated as household waste,instead, it should be handed over to the applicable collection point for the recycling of electrical and electronic equipment.
9. Battery Recycling: the product battery should not be treated as household waste, instead, it should be handed over to the applicable used battery collection point for recycling.
10. Only have your device repaired by LVE. Do not attempt to repair it by yourself as damage or personal injury may occur.

WARNINGS

Read all of this information carefully before using the Orion II. Save and maintain this information in a safe place for reference. Failure to follow these safety instructions and warnings may result in serious injury or damage.

Any different use of the Orion II is at your own risk.

The Orion II is for use only by current adult (21+) smokers and vapers. The Orion II is not a smoking cessation product and is intended as such. If you seek to quit smoking, vaping or all use of nicotine, please consult with a healthcare professional or visit www.smokefree.gov.

WARNING: The Orion II is an open-system device intended for use only with water-soluble PG/VG-based e-liquids that may or may not contain nicotine.

Please check with your e-liquid supplier. If you choose to vape nicotine-containing e-liquids beware that nicotine is a highly addictive chemical.

Quitting all use of nicotine is difficult, both physically and mentally.

Depending on how you use the Orion II and your e-liquid of choice, you may be exposed to higher levels of nicotine than with other tobacco products.

WARNING: If you choose to vape nicotine-containing e-liquids beware that the developing brain is more vulnerable to nicotine addiction and young people in particular should not use the Orion II. Nicotine exposure can disrupt normal brain development and may have long-lasting effects, such as increased impulsivity and mood disorders. Please check with your e-liquid supplier to confirm nicotine content.

WARNING: Do not insert any foreign object(s) or ingredient(s) into the device. The ORION II is not intended for use with cannabis/ marijuana/THC oils.

POSSIBLE SIDE EFFECTS

You may experience the following results if you use nicotine containing e-liquid with this product. If you have any of these symptoms or any other adverse experience when using the product, immediately discontinue use. If any side effects continue, seek medical assistance. Feeling faint/Nausea/Dizziness/Headache/Coughing/Irritation of the mouth or throat/Stomach discomfort/Hiccups/Nasal congestion/Nomit/ Chest palpitations/pain or an irregular heart rate.

ORION II IS NOT SUITABLE FOR USE BY:

- Persons under the legal smoking age.
- Persons experiencing heart disease, stomach or duodenal ulcers, liver or kidney problem, long-term throat disease or difficult breathing due to bronchitis, emphysema or asthma.
- Persons with an overactive thyroid gland or experiencing pheochromocytoma (a tumour of the adrenal gland that can affect blood pressure).
- Persons taking certain medications like Theophylline, Ropinirole or Clozapine and etc.

ORION II IS NOT RECOMMENDED FOR:

- Non-smokers
- Pregnant or breastfeeding women
- Persons under the legal smoking age

WARRANTY GUIDELINE

LVE will provide repair or replacement to the original purchaser of this product under warranty according to the following terms and conditions:

1. This warranty covers defects in materials or workmanship in this product if a claim is submitted to LVE within 90 days of purchase by the end user.
2. This warranty may be disqualified as a result of the following circumstances:
 - ▶the customer does not provide this warranty card and the original receipt of purchase.
 - ▶merchandise failure or damage is caused by improper use or unauthorized adjustments.
 - ▶merchandise failure or damage as a result of excessive force or impact and non-recommended operating conditions (see user manual).
 - ▶merchandise failure or damage caused by exposure to water or other conducting liquids.
 - ▶merchandise failure or damage caused by use with Non-LVE brand components or recommended e-liquids.In no event will LVE be liable for any SPECIAL or CONSEQUENTIAL damages arising from the use of this product, nor for injury to any person, or any claim for damages arising from the use of this product.

Except as expressly provided in this Limited Warranty, LVE expressly disclaims all implied warranties for this product of any kind whatsoever, including, but not limited to, implied warranties of merchant-ability or fitness for a particular purpose and all warranties imposed by statute, after the expiration of 90 days after purchase by the end user.

For more information, please consult our website at www.lvevapor.com or email us at support@lvevapor.com

Warranty Claim Procedure

1. Please consult the merchant for the detailed process of warranty claim by filing out the Purchase Information below.
2. Please keep the warranty card for after-sale service. Warranty may be disqualified if the warranty card is lost.

PURCHASE INFORMATION

Purchasing Information

Product Model: _____

Date Of Purchase (the purchase date on the receipt): _____

Store Information

Store Name: _____

Phone: _____

Address: _____

Customer Information

Customer name: _____

Phone: _____


Address: _____


ORION[®] II

a new era by LVE[®]



 www.lvevapor.com

 Instagram: Lve_ vapor

 FaceBook: @LVEvapor